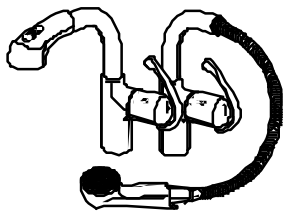
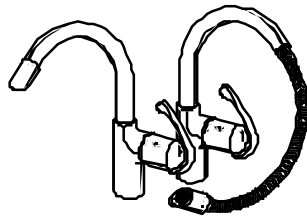


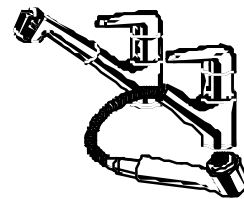
33.853 Europlus
(made after June '96)



33.737 Ladylux Plus



33.757 Ladylux Café



33.871 Eurowing
(made after June '96)



Low-flow remedies

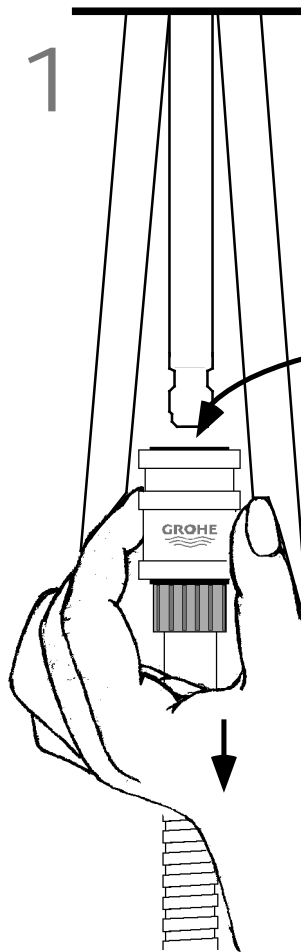
This guide is to help the homeowner or installing contractor correct a problem with restricted flow rate through GROHE Europlus, Eurowing, Ladylux Plus, and Ladylux Café kitchen faucets.

In all cases, the flow restriction is environmentally caused: Debris from the existing piping system becomes lodged in the faucet. GROHE doesn't make pre-plugged-up faucets.

There are three locations where debris can get caught... follow these steps in order.

clear the quick coupling

1



Look under the sink and locate the yellow & black quick coupling. Pull-down on the yellow ring, and the quick coupling will detach from the mixed water supply tube.

Tap or rinse out the debris from the top of the coupling.

The quick coupling can be easily unscrewed from the hose if needed.

When the coupling is clean, screw it back on to the hose. Hand tighten only!

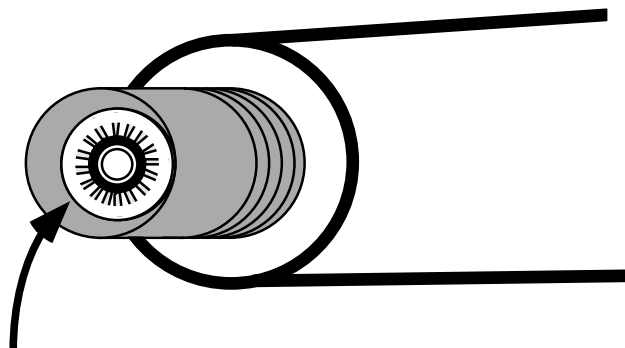
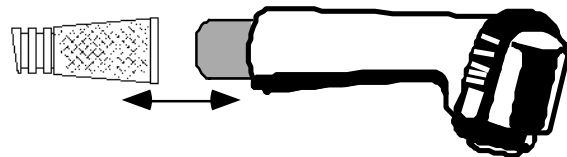
To re-attach, slide the yellow ring back, and press the coupling onto the tube. Test the connection by pulling lightly down on the hose.

If the flow is not restored, go to step 2.

clean the spray head restrictor

2

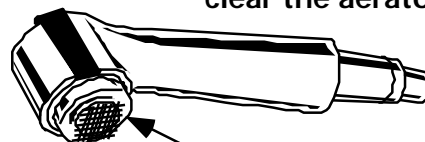
Unscrew the spray-head from the hose, and look into the connection end of the spray-head



Inside of the connection piece, there is a flow-restrictor that can get filled with fine sand or dirt. Rinse out the dirt. If the black rubber o-ring is removed for cleaning, it must be replaced to meet California flow requirements.

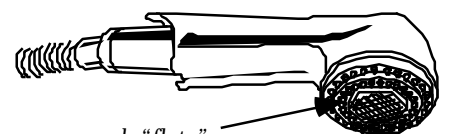
clear the aerator

3



wrench "flats"

Unscrew the aerator housing using a crescent wrench on the "flats" provided. The aerator will drop out, and use a toothbrush to clear debris from the inlet screen. The aerator can't be taken apart.



wrench "flats"

for more information, go see your local GROHE showroom, call your plumber, or call... Western Sales Co. 408-353-9000